



Suprint SUP-300/400

SUCARD OPERATION INSTRUCTION

深圳市速普特智能科技有限公司

Shenzhen Suprint Smart Technology Co.,Ltd.



Thank you very much for using Suprint SUP-300/400 card printer for the first time, please read the following instructions carefully in advance.

Content

1. Install Sucard.....	3
2. Sucard Interface	6
1) Edit Interface.....	6
1.1 File.....	6
1.2 Direction.....	6
1.3 Clipboard	6
1.4 Printing side	6
1.5 Zoom in or out.....	7
1.6 Paint	7
1.7 Connect with Database	7
1.8 Grid-setting	7
1.9 Scale and Coordinate	8
1.10 Database.....	8
1.11 Background.....	8
2) Module Interface	9
2.1 Contact IC card.....	9
2.2 Magnetic stripe card	10
2.3 RFID card	10
2.4 Option-setting	11
3) Languages Interface	11
3. Card Design	13
1) Text Edit.....	13
2) Imbedding Picture.....	15
3) Imbedding Barcode	18
4) Imbedding QR code	19
5) Camera	21



6) Graph Design.....	23
4. Card Printing.....	25
1) Print-setting.....	25
2) Select driving program.....	26
3) Printing setting	26
4) Scope of printing	26
5) Duplicate.....	26
6) Start printing.....	26
7) Monitor window of printing jobs.....	26
5. Use Database.....	28
1) Create Database	28
2) Create Template.....	28
3) Connect with Database.....	29
4) Mass printing Database.....	31

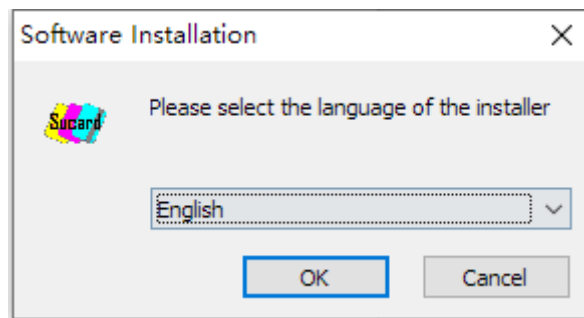
1. Install Sucard

- 1) Double-click Install_Sucard_20170609_01.exe, enter Install Guide.

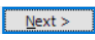


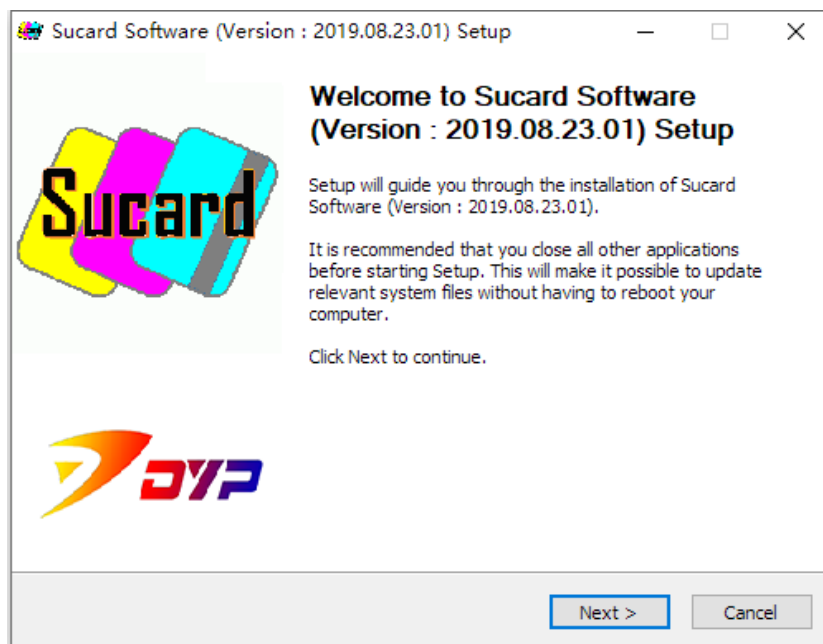
Install Program

- 2) Choose language.



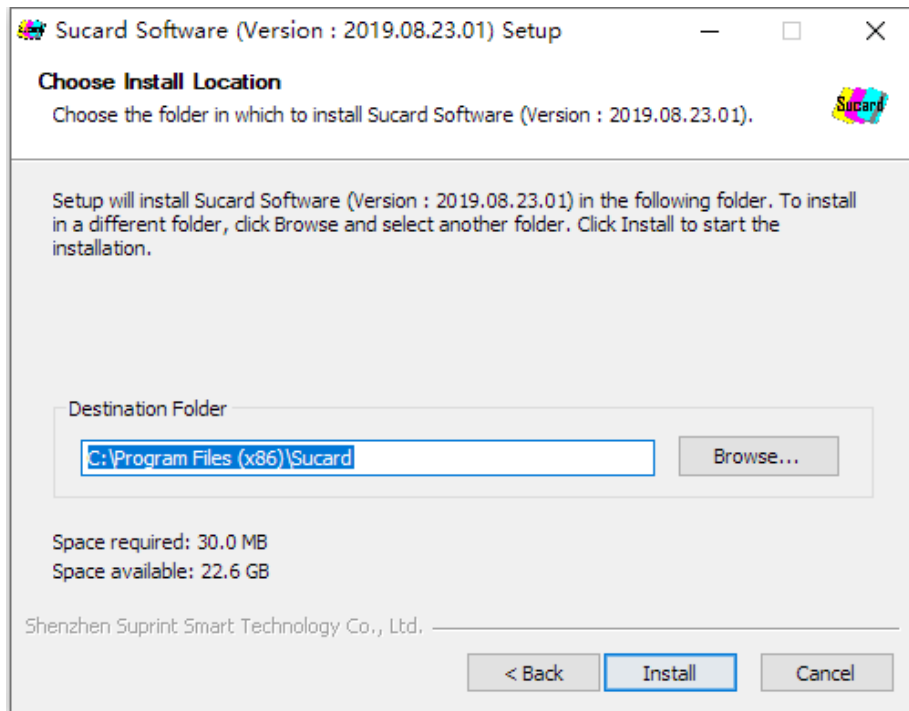
Choose language

- 3) Install Guide. Click  next.



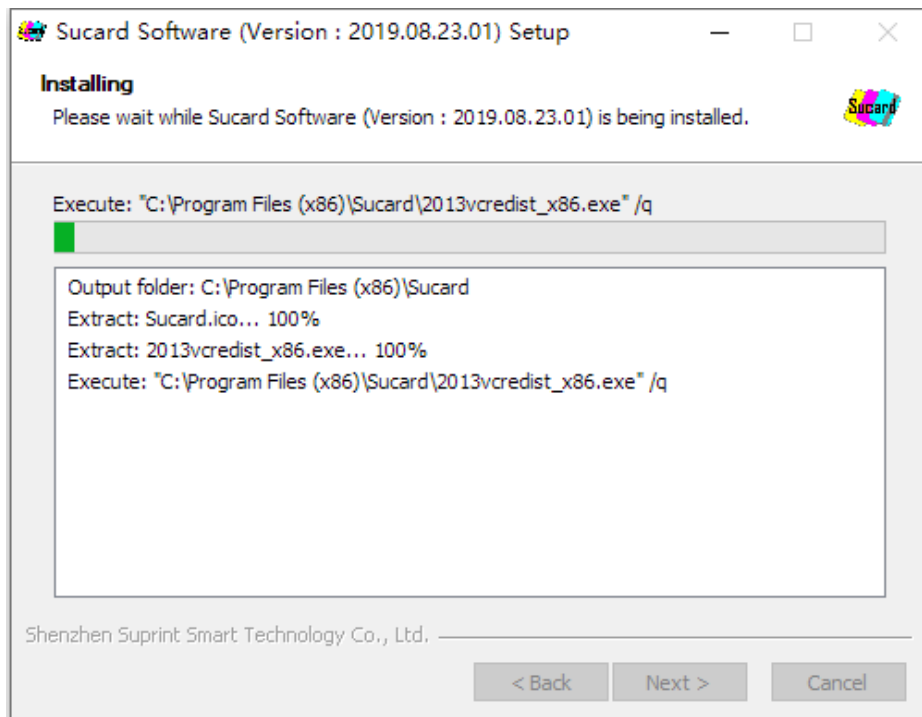
Install Guide

- 4) Choose the destination directory and click install key.。



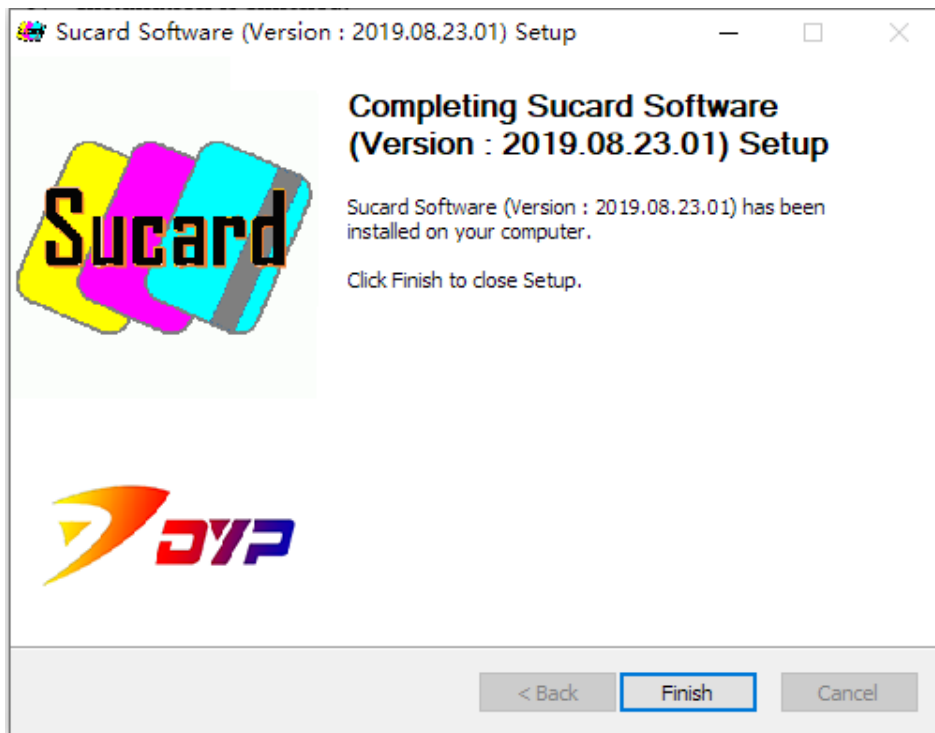
Choose Directory

- 5) It takes a few minutes to install, please be patient.



Installing

6) Installation is finished.



Finished

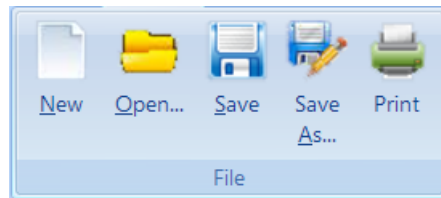
2. Sucard Interface

This chapter introduces the modul parts of Sucard and their functions respectively.

1) Edit Interface

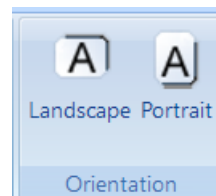
1.1 File

Creat, open or save a print template of Sucard, click Print key to print.
Please see detailed information in chapter4 “Print Card”



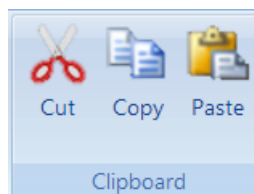
1.2 Direction

Adjust the print direction to horizontal or vertical according to the image itself.



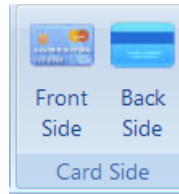
1.3 Clipboard

Cut, copy and paste against design elements, the same function as Word.



1.4 Printing side

Choose front or back side as the printing side. No adjust in case of using single side printer.



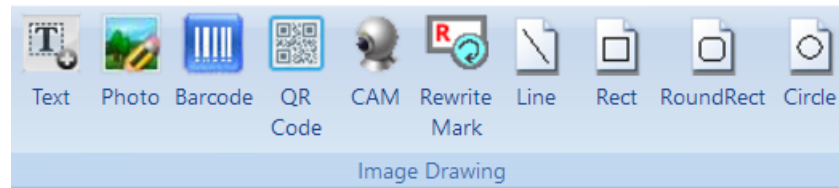
1.5 Zoom in or out

Adjust the size of display, or press Ctrl+ to zoom in or out.



1.6 Paint

The tools for card design, click one and drag/drop in the window of design.
Please see detailed information in chapter3 “Card Design”



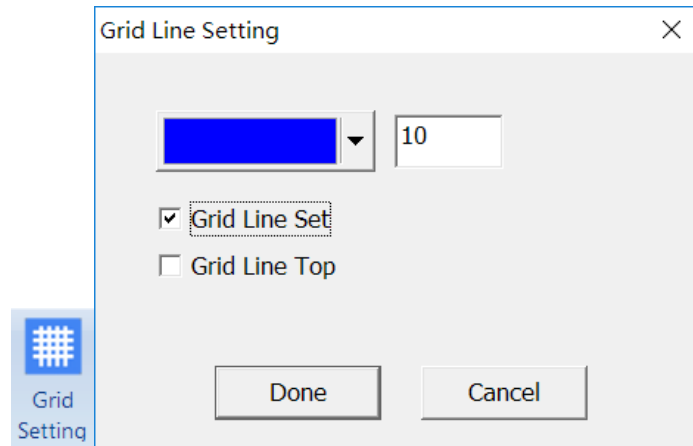
1.7 Connect with Database

Open the window of Connect with Database



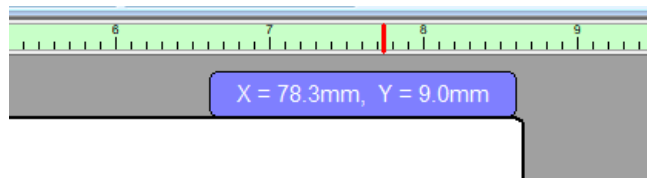
1.8 Grid-setting

Open and set grid.



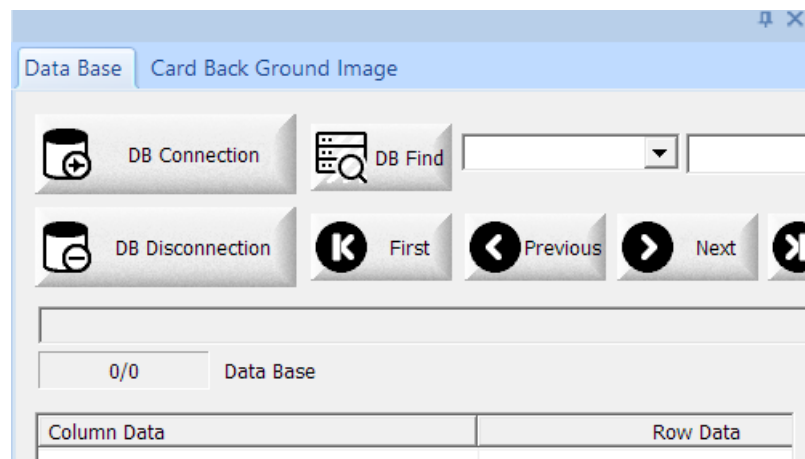
1.9 Scale and Coordinate

Show the X/Y coordinate and scale of the mouse pointer.



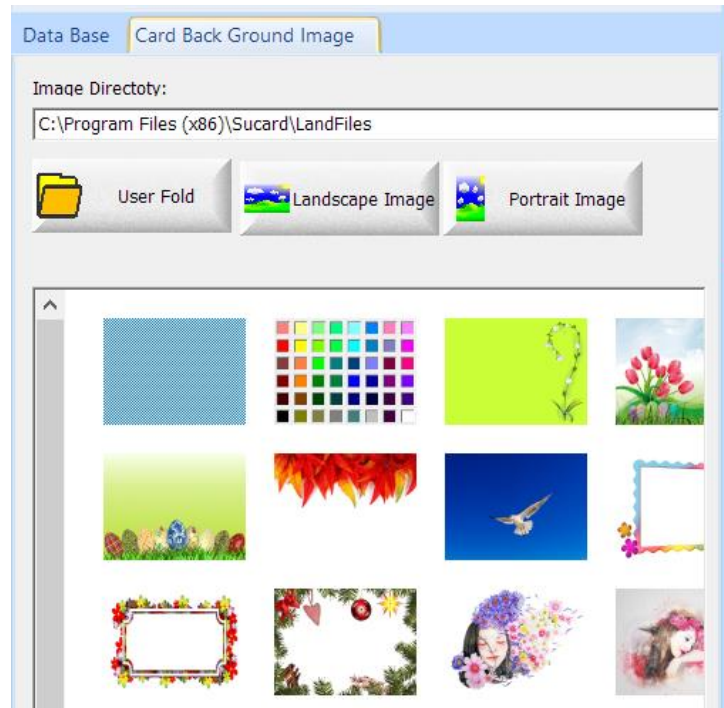
1.10 Database

Connect the Database, display and position of the connected content in the Database. Please see detailed information in chapter5 “Use Database”



1.11 Background

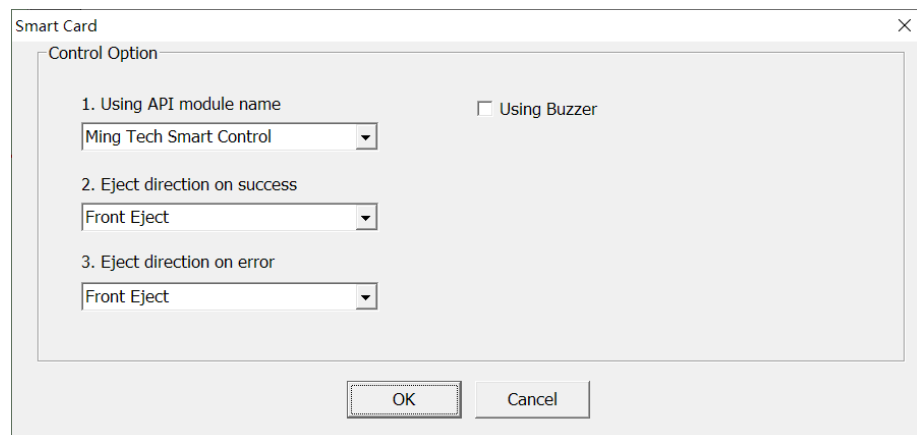
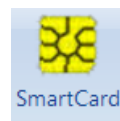
Double-click default picture or user-defined picture as the background image.



2) Module Interface

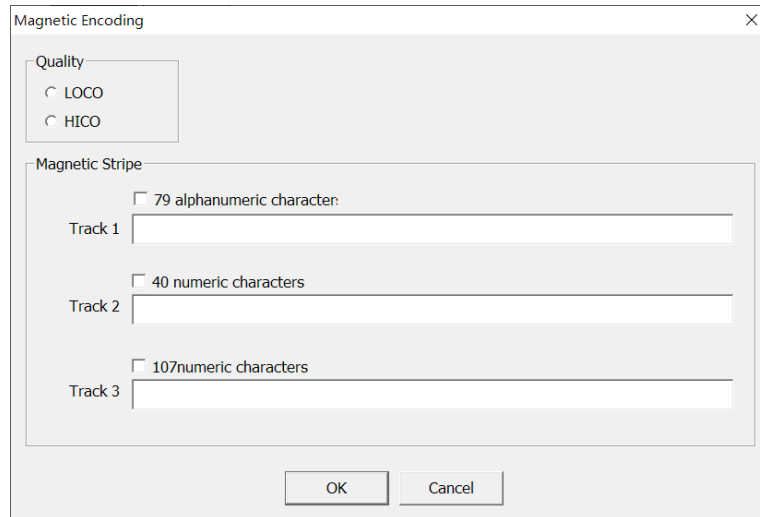
2.1 Contact IC card

Setting execute values of contact IC module when the printer supports contact IC card, includes: type of contact IC module, good card(read/write successfully) output direction, bad card(read/write unsuccessfully)output direction and beep reminder.



2.2 Magnetic stripe card

Setting execute values of magnetic stripe module when the printer supports magnetic stripe card, includes: high coercivity , low coercivity , Verification switch , 1/2/3 track etc.

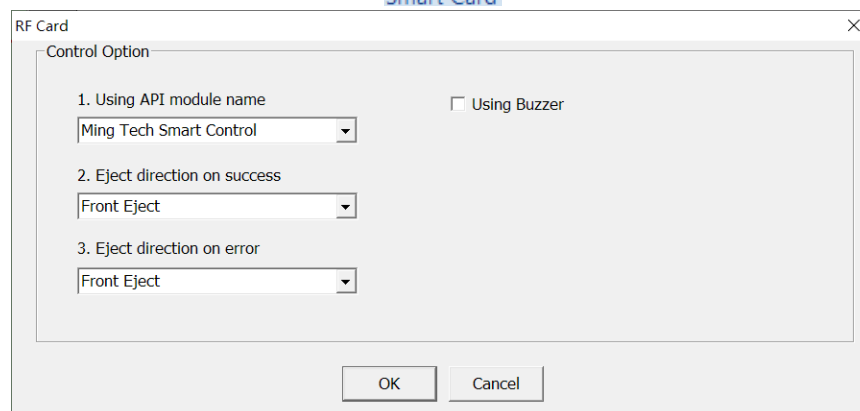
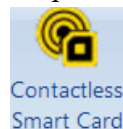


The 'Magnetic Encoding' dialog box contains the following elements:

- Quality:** Radio buttons for 'LOCO' and 'HICO'.
- Magnetic Stripe:** A section with three checkboxes and text input fields:
 - 79 alphanumeric character: Track 1
 - 40 numeric characters: Track 2
 - 107 numeric characters: Track 3
- Buttons:** 'OK' and 'Cancel' buttons at the bottom.

2.3 RFID card

Setting execute values of contactless IC module when the printer supports contactless IC card, includes: type of contactless IC module, good card(read/write successfully) output direction, bad card(read/write unsuccessfully)output direction and beep reminder.



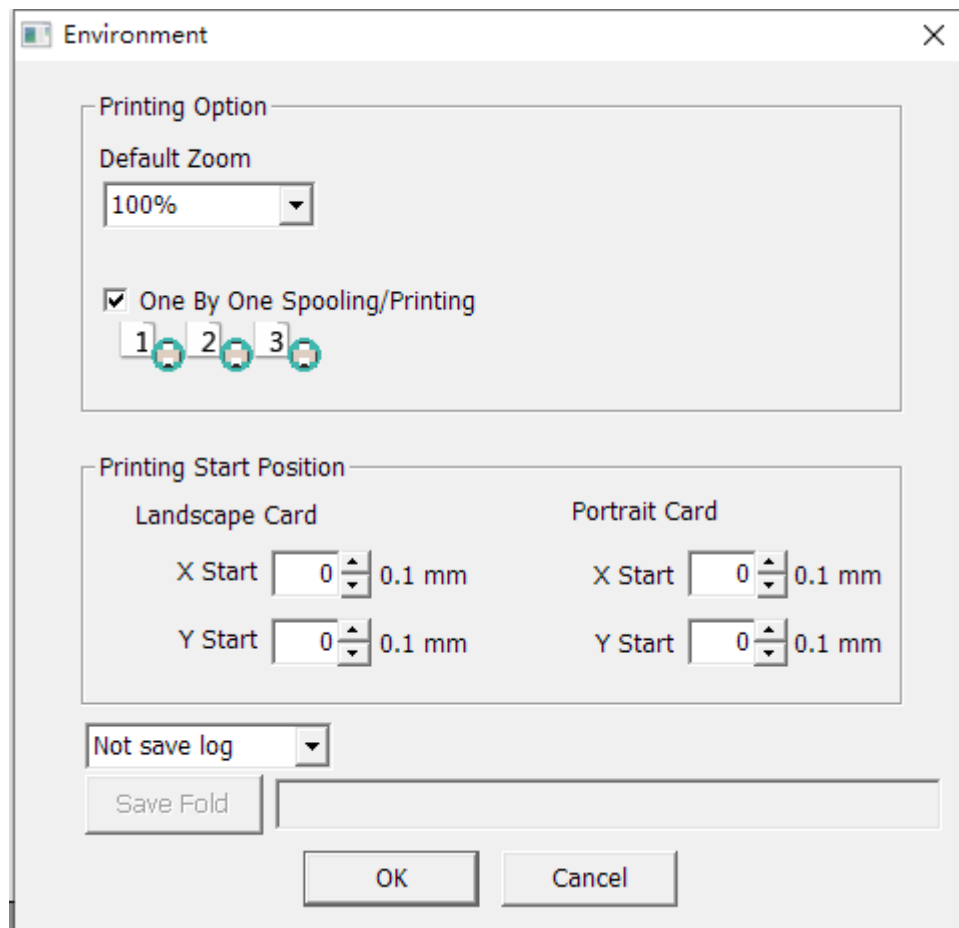
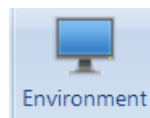
The 'RF Card' dialog box contains the following elements:

- Control Option:** A section with three dropdown menus and one checkbox:
 - 1. Using API module name: 'Ming Tech Smart Control' (dropdown), Using Buzzer
 - 2. Eject direction on success: 'Front Eject' (dropdown)
 - 3. Eject direction on error: 'Front Eject' (dropdown)
- Buttons:** 'OK' and 'Cancel' buttons at the bottom.

2.4 Option-setting

Options of adjusting Sucard software, includes:

- a) Default zoom value: set the defaulted size of edit area of Sucard(reboot Sucard to take effect after setting)
- b) Print one by one: set sequence of repeated printing when batch printing different contents.
- c) Printing start position: adjust horizontal or vertical printing start position.
- d) Save log file: Sucard printing log file will be created in the selected route when tick this option, it is easy for seeking.



3) Languages Interface



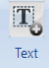
Available in 9 different national languages: Iran, Simplified Chinese, English, French, Japanese, Korean, Portuguese, Russian, Spanish, etc.:

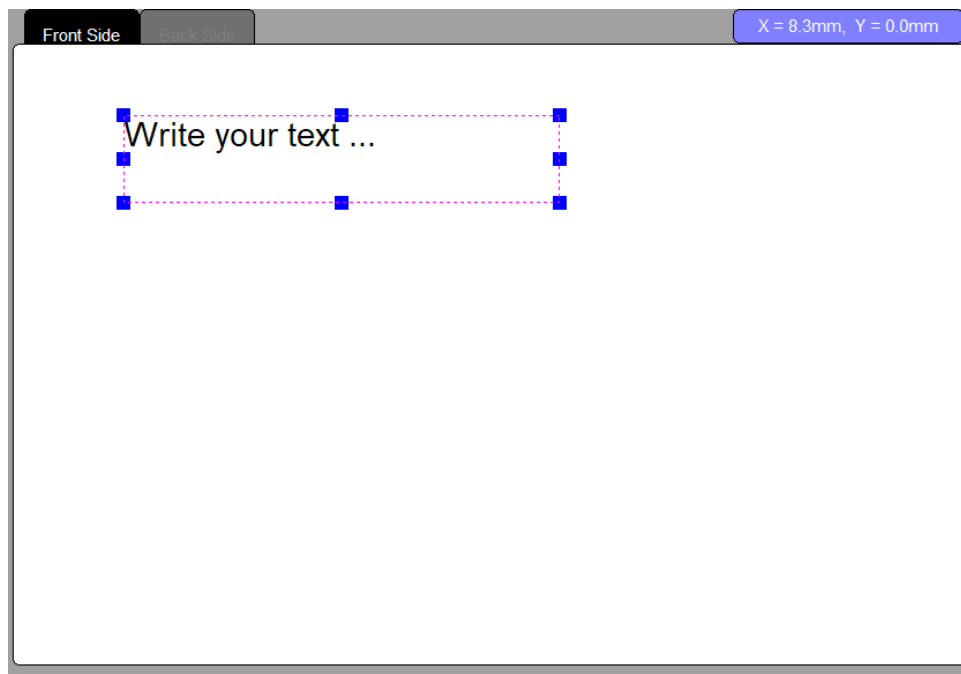


3. Card Design

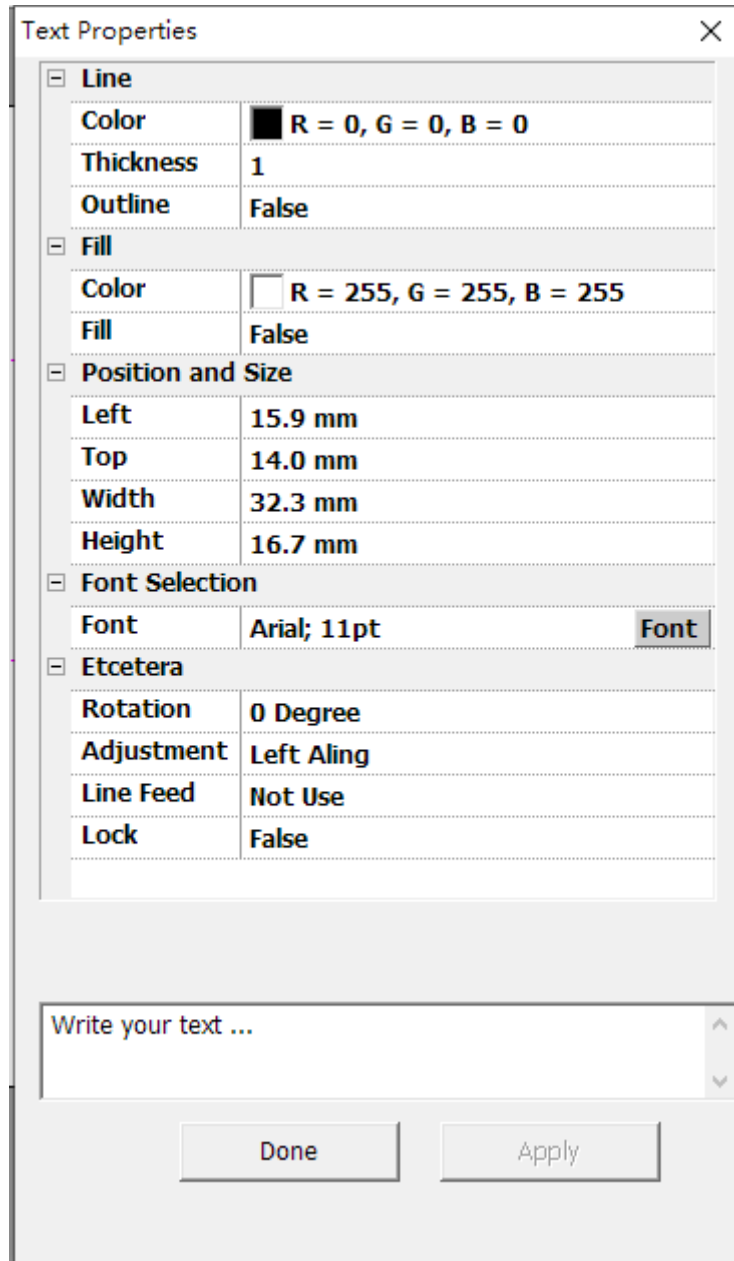
This chapter introduces how to use Paint Module of Sucard, and design card template in the Card Design interface. Detailed functions of keys in the Paint Module can be seen in this chapter.

1) Text Edit

Click  key, press the left key of mouse and drag in the Card Design interface, then you can get a Textbox.



Double-click this Textbox and open the window of Text Attribute, then you can edit the text. As required, you can set the outline border, filling, position, size, rotation angle, lock of the text, or set the font, font size, color, word wrap of letters.




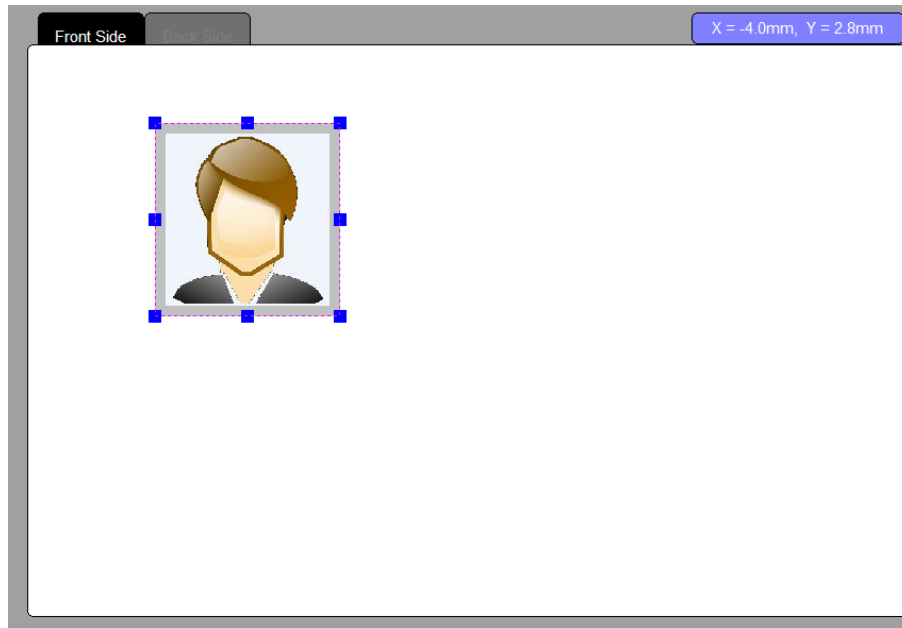
Text Properties	
Line	
Color	<input checked="" type="checkbox"/> R = 0, G = 0, B = 0
Thickness	1
Outline	False
Fill	
Color	<input type="checkbox"/> R = 255, G = 255, B = 255
Fill	False
Position and Size	
Left	15.9 mm
Top	14.0 mm
Width	32.3 mm
Height	16.7 mm
Font Selection	
Font	Arial; 11pt Font
Etcetera	
Rotation	0 Degree
Adjustment	Left Aling
Line Feed	Not Use
Lock	False

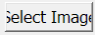
Write your text ...

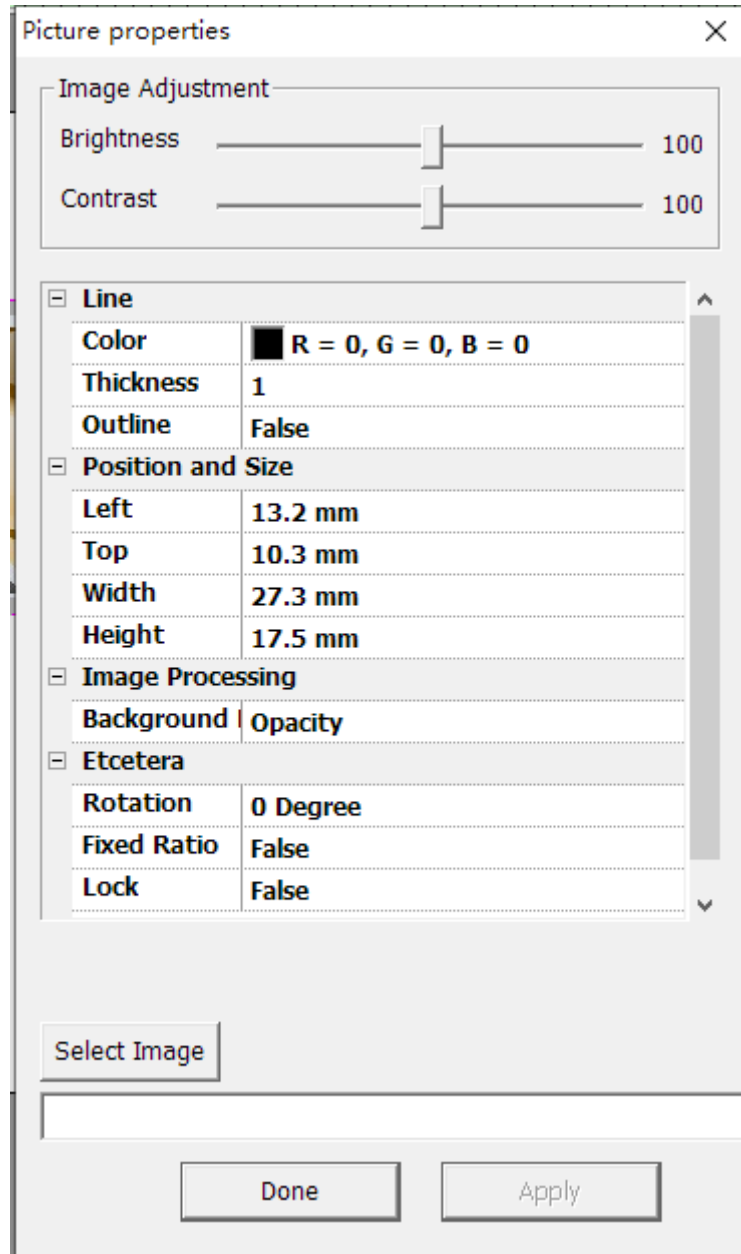
Done Apply

2) Imbedding Picture

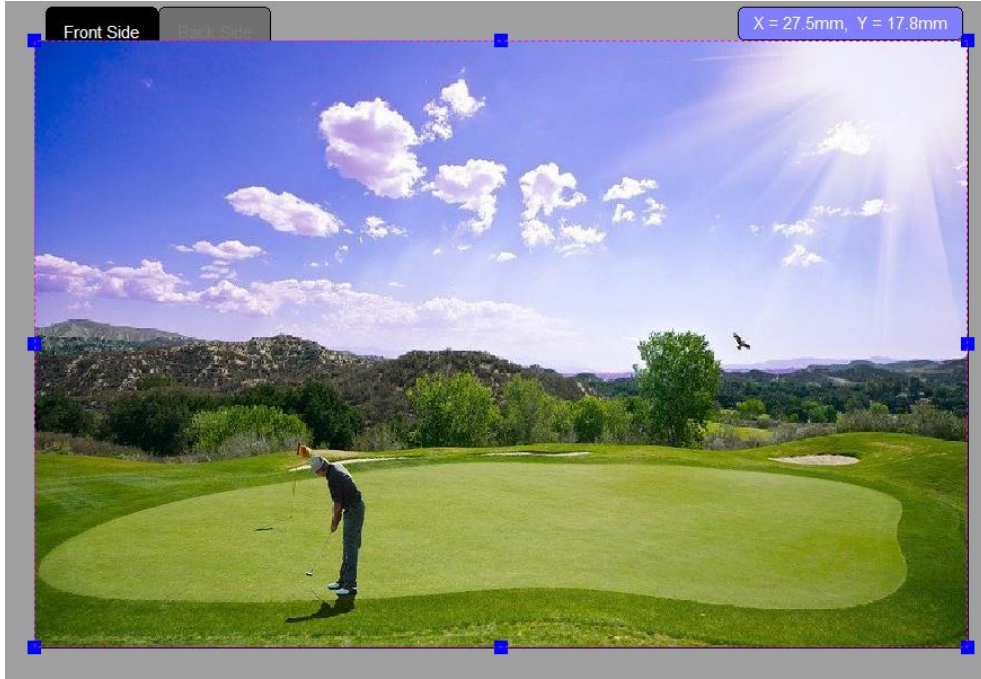
Click  key, press the left key of mouse and drag in the Card Design interface, then you can get a Picturebox.




Double-click this Picturebox and open the window of Picture Attribute, importing the picture in the computer by clicking  key. As required, you can set the outline border, position, size, rotation angle, fixed proportion, lock of the picture.

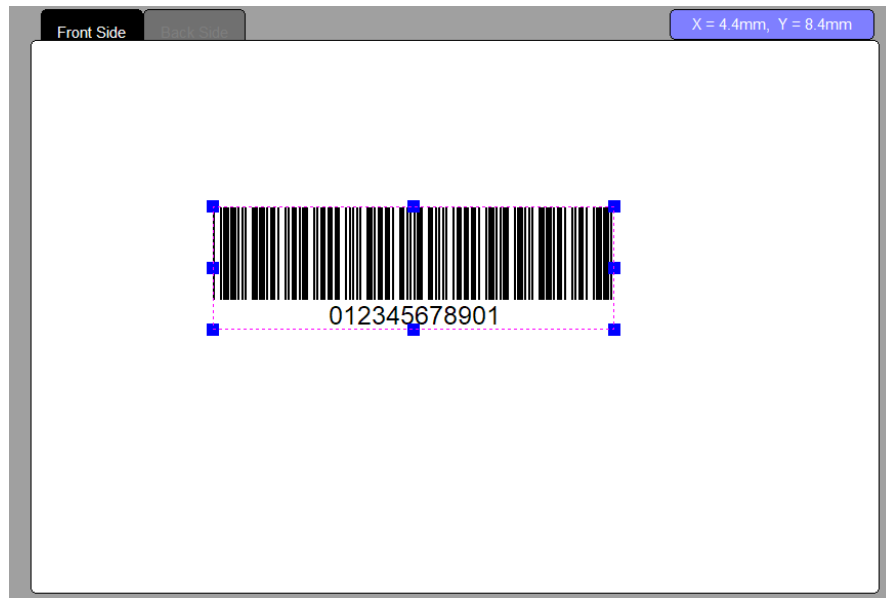


Right click on the picture box and select **Card Size Expansion** to make the image automatically spread over the entire card.

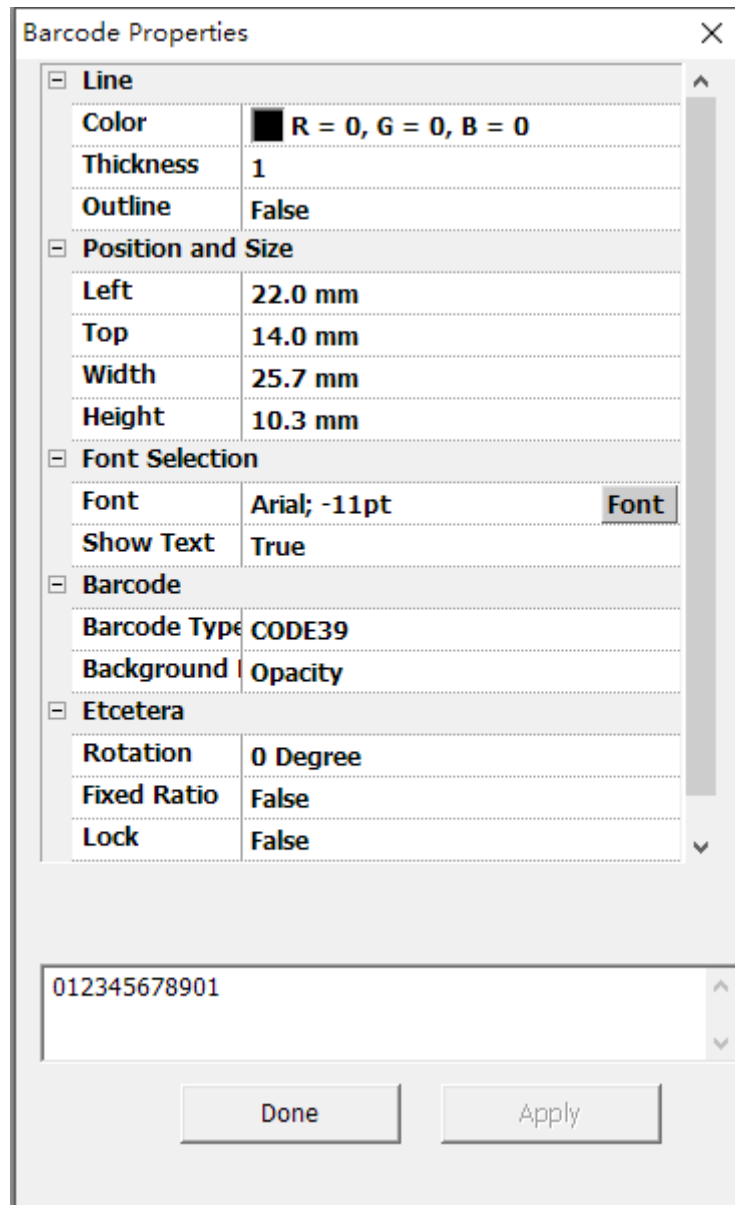


3) Imbedding Barcode


Click  key, press the left key of mouse and drag in the Card Design interface, then you can get a barcode.

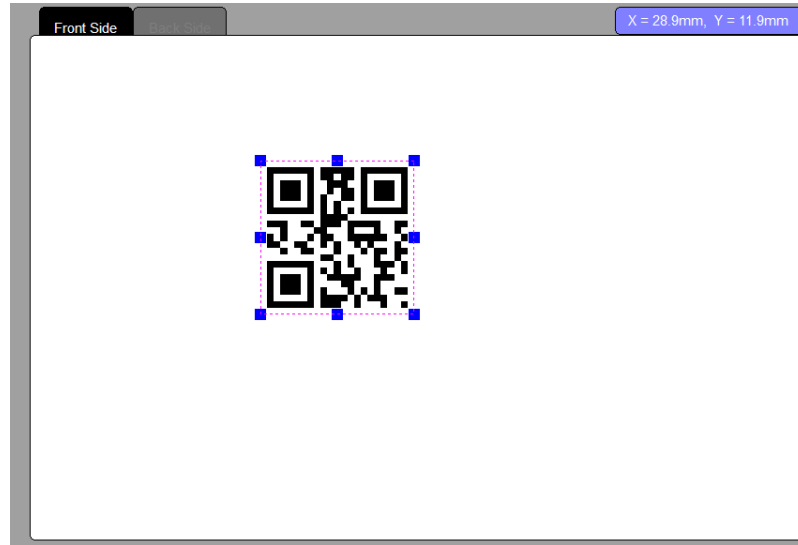


Double-click this barcode and open the window of Barcode Attribute, then you can amend data in the or as required, you can set the outline border, position, size, code system, rotation angle, fixed proportion, lock of the barcode, or set the font, font size, color of letters.

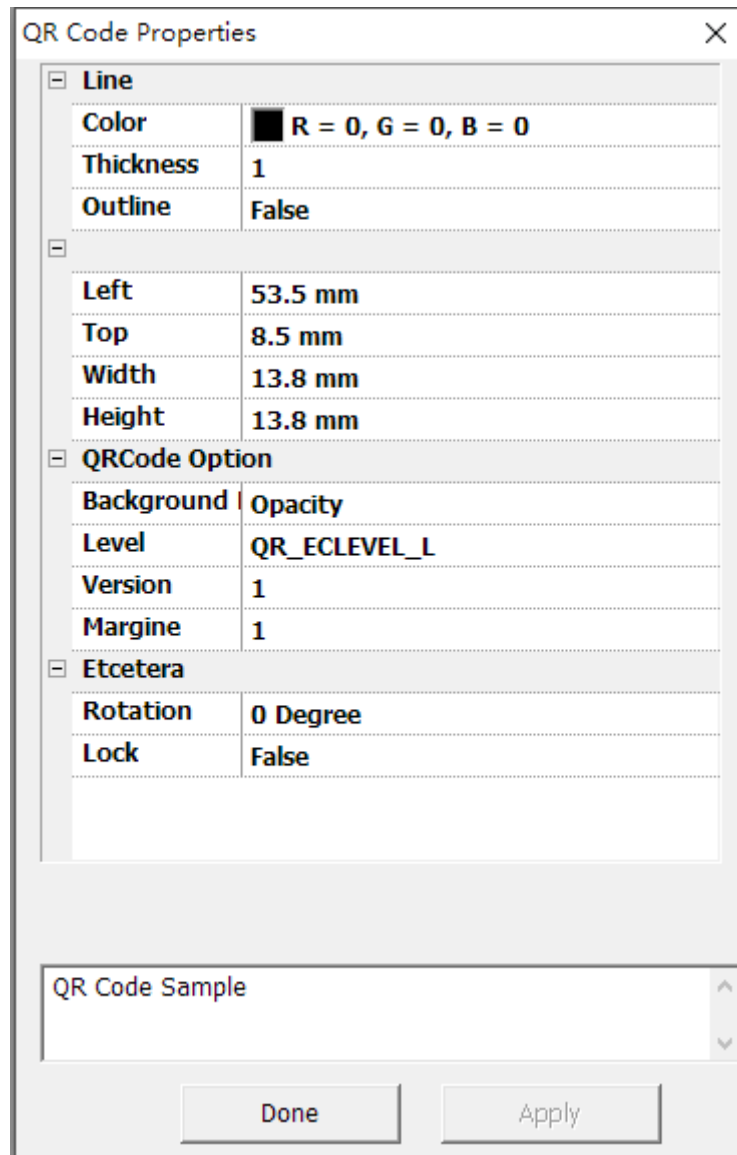


4) Imbedding QR code

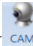
Click  key, press the left key of mouse and drag in the Card Design interface, then you can get a QR code.

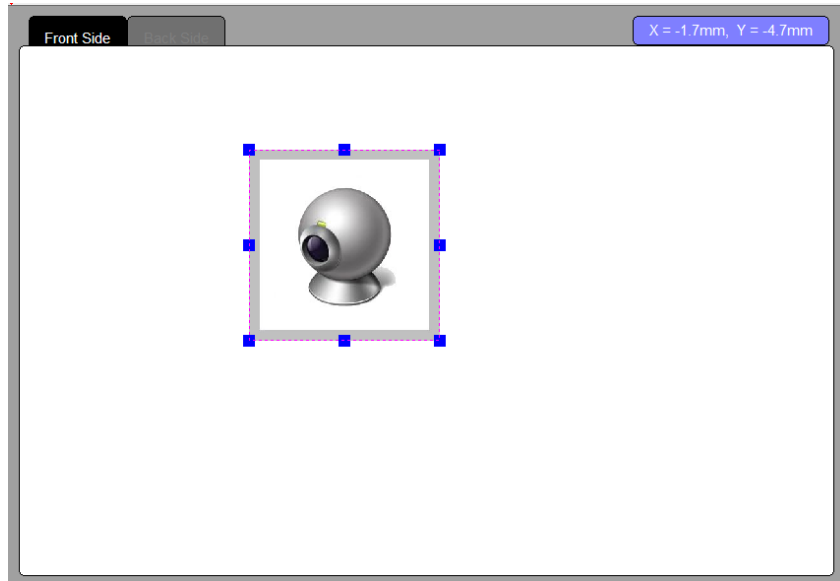


Double-click this QR code and open the window of QRcode Attribute, then you can amend data in the or as required, you can set the outline border, position,size,code system,grade, fixed proportion, lock of the QR code.

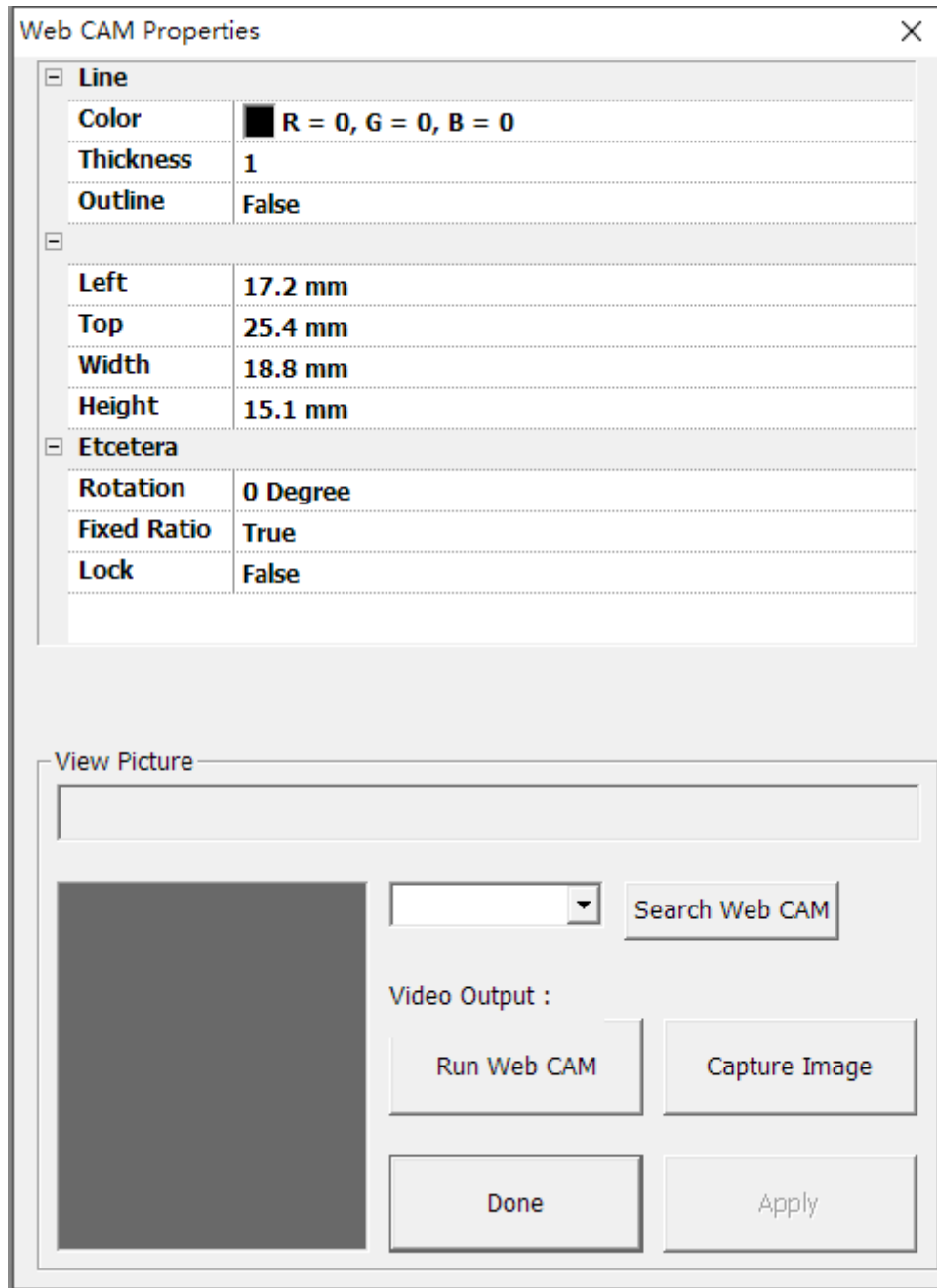


5) Camera





Click  key, press the left key of mouse and drag in the Card Design interface, then you can get a window of Camera.

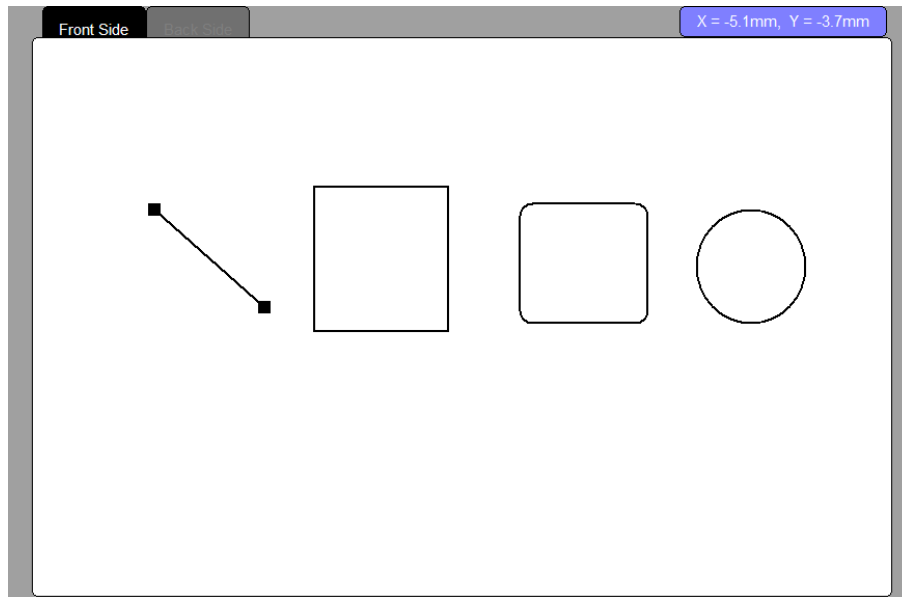


Double-click this QR code and open the window of QRcode Attribute, click key to connect the camera in the computer, then click key to turn on the camera. You click key to obtain the real-time picture as image or as required, you can set the outline border, position, size, rotation angle, fixed proportion, lock of the image.

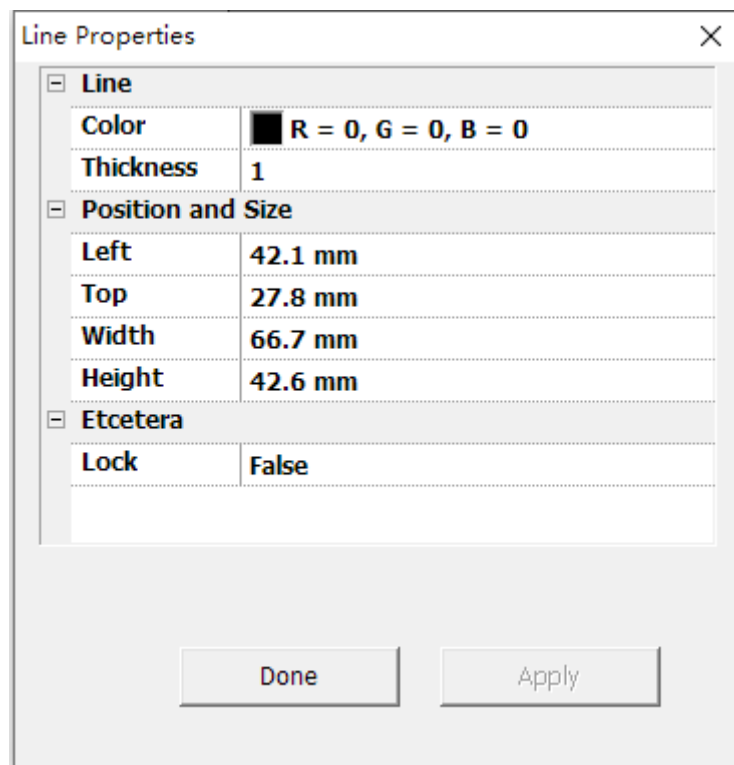


6) Graph Design

Click any one of these graphs    , press the left key of mouse and drag in the Card Design interface, then you can get a corresponding graph.



Double-click the Graph and open the window of Graph Attribute. As required, you can set the line, filling, position, size, lock of the Graph.




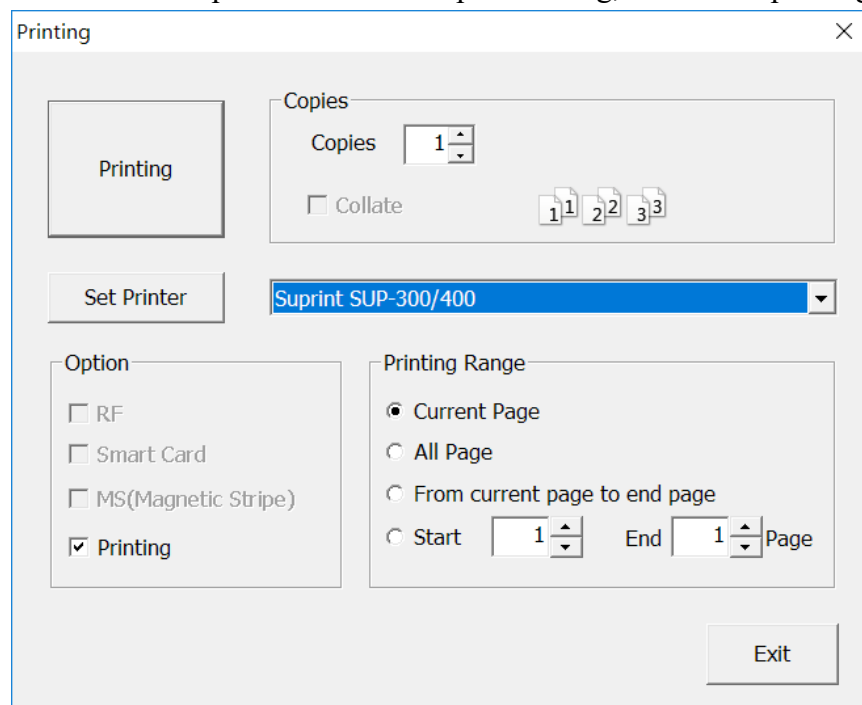
4. Card Printing

This chapter introduces how to use SUP300/400 to print the well-designed card template by using Sucard. Please confirm below things before printing:


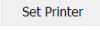
- ① Suprint SUP300/400 driving program is well installed.
- ② Switch on the power of the printer connected with the computer and the printer is STANDBY, “Connected” shown on the LCD display.
- ③ Ribbon and blank cards are well installed.

1) Print-setting

Click button  and open the window of print-setting, and set the printing jobs.




2) Select driving program

Click pull-down menu  and select Suprint SUP300/400 driving program. Then click button  to set the driving program detailed. More information about driving program setting, please see 《Suprint SUP-300&400 Driver USAGE INSTRUCTION》

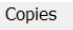
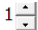

3) Printing setting

For the devices which support additional functions, you can tick options in the printing setting to execute actions, includes: read/write contactless IC card, read/write contact IC card, read/write magnetic stripe and printing etc.

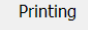
4) Scope of printing

 Current Page is default in the scope of printing, other options are used for mass printing after connecting with the Database. More information is in the chapter 5 [use Database]

5) Duplicate

You can select the amount which can be printed repeatedly in  1 ; You can select printing sequence when printing repeatedly by using 

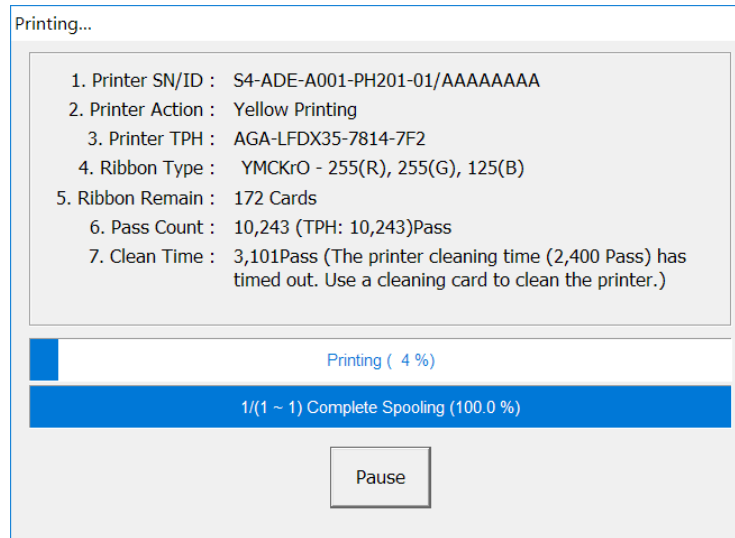
6) Start printing


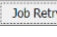
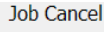
Click button  and start this already set printing job. Please make sure the ribbon type in the driving program the same as that installed in the printer.

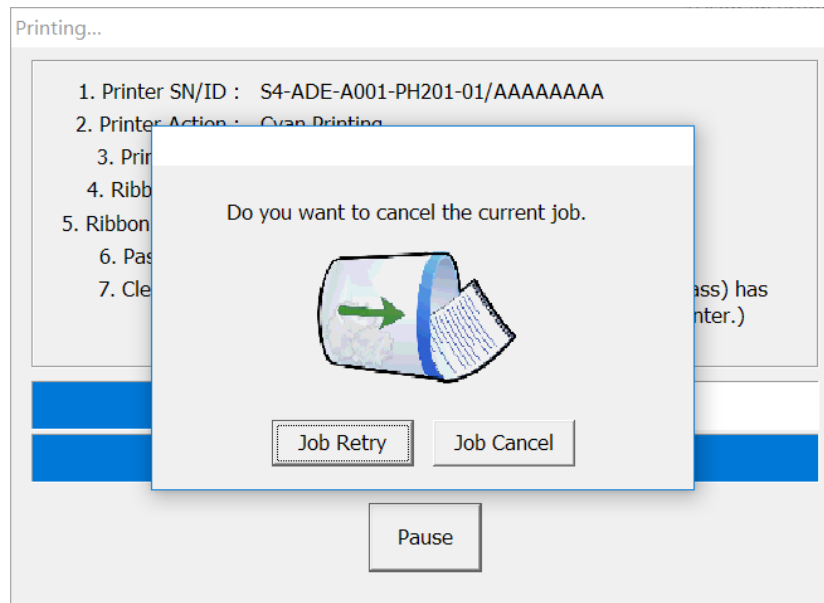
7) Monitor window of printing jobs

Printer ID, printer movement, serial no. of printing head, ribbon type, rest

amount of ribbon, accumulative printing amount, printer cleaning, printing queue process and status can be real-time watched through monitor window of printing jobs.



You can stop printing by clicking button . You can click button  to continue printing. You can cancel current printing job by clicking .



5. Use Database

It is more convenient to print mass variable contents by using Database.

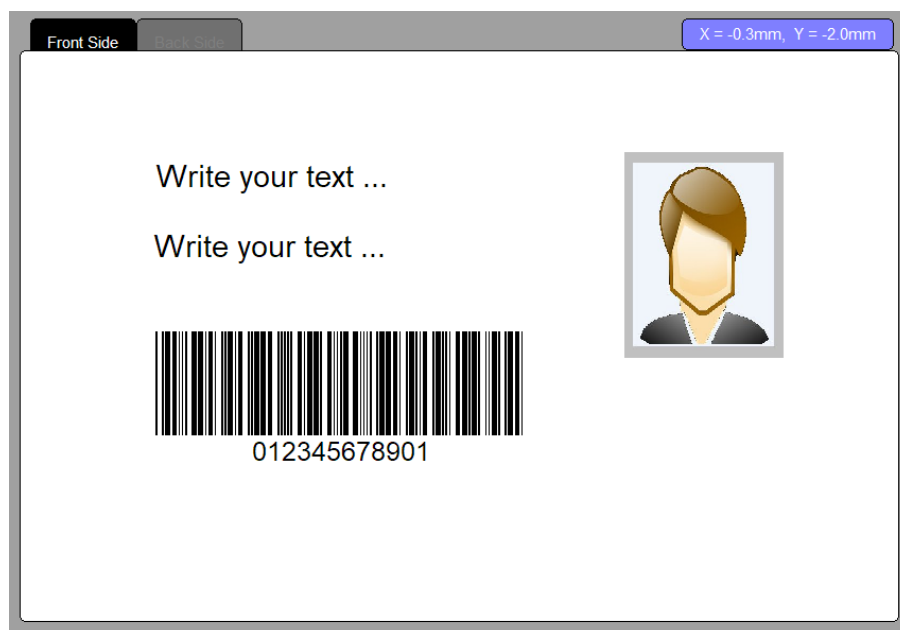
1) Create Database

Create an Excel file as Database, in which the header and contents are well edited, and the image data must be complete path leading to the image. As below shows, save and close the edited Excel file and the Database is finished.

	A	B	C	D	E	F	G
1	Name	Age	No.	Image	Column Data		
2	AAA	22	214775	E:\Card\Image\1.jpg			
3	BBB	54	214776	E:\Card\Image\2.jpg			
4	CCC	34	214777	E:\Card\Image\3.jpg	Row Data		
5	DDD	25	214778	E:\Card\Image\4.jpg			
6							
7							

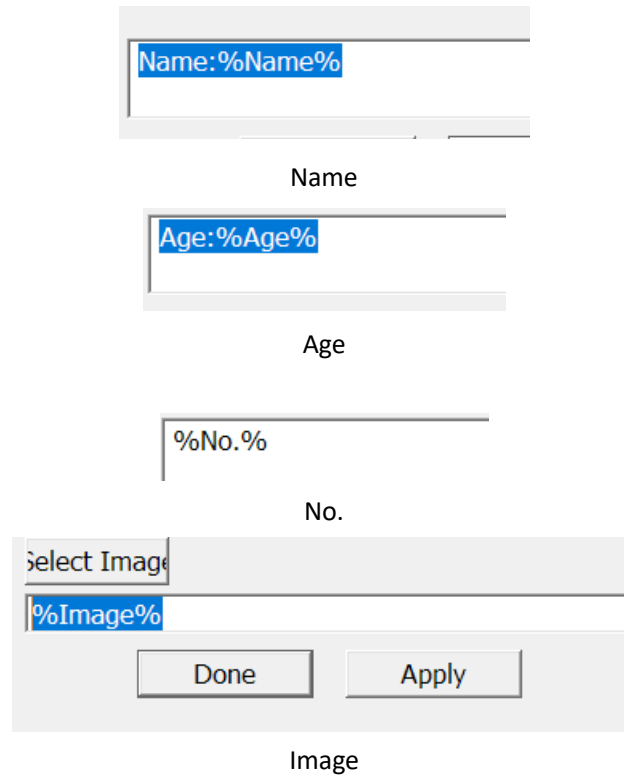
2) Create Template

Open Sucard, put text, picture and barcode etc and adjust them on appropriate positions respectively as per [Card Design] in chapter3.




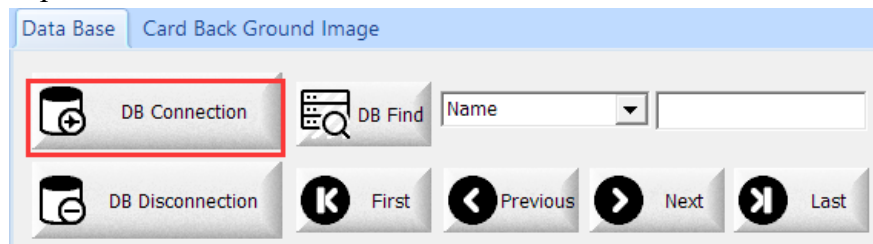
Edit variable data with Database variable symbols in Attribute of elements in

sequence, the format:%data item%. It may be displayed in blank after setting, but data content corresponding to data item will be displayed when connecting with Database.

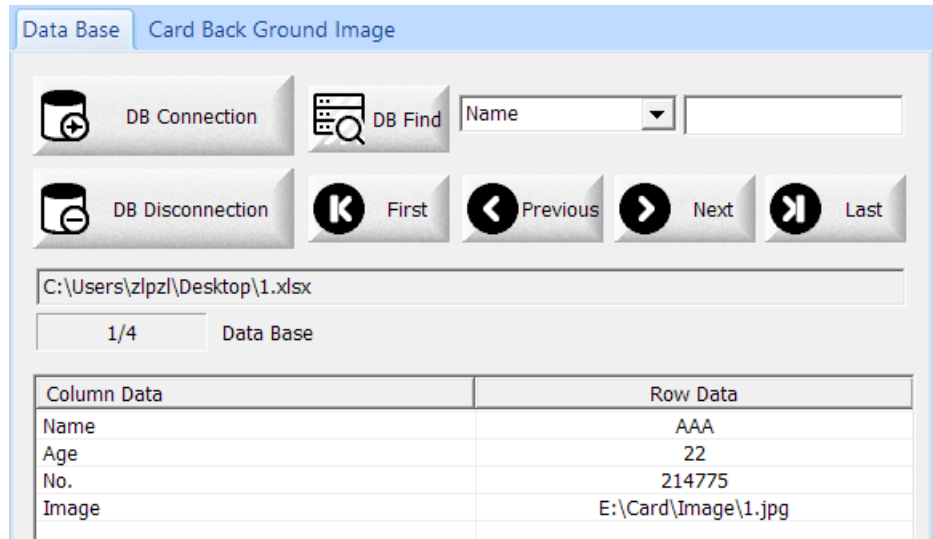


3) Connect with Database

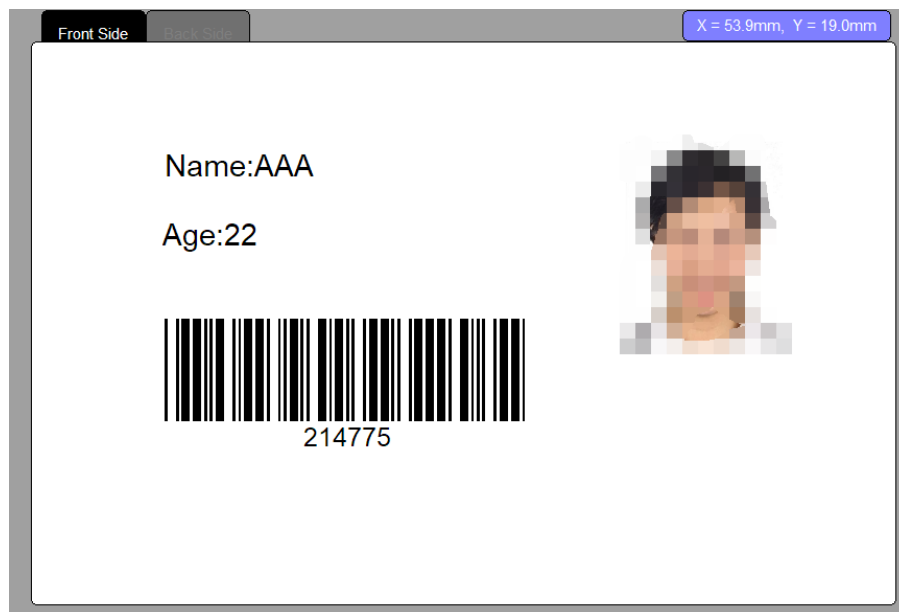
Click button  in Database Window, find the saved Database file in step1 and open it.

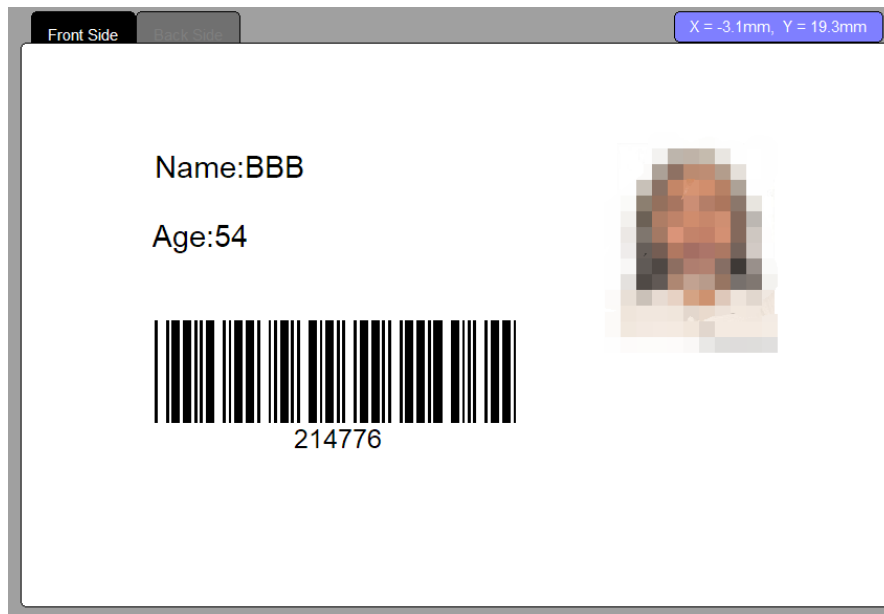


You can see data items and data contents in Database Window after connecting with the Database file successfully.

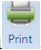


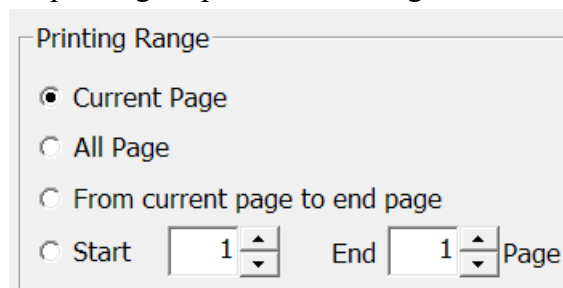
The elements already set in the Database template will display Data content corresponding to data item.





4) Mass printing Database

Click button , set printing scope in the Printing Set Window.



- ① **Current Page** Print the Data item in Sucard design interface currently.
- ② **All Page** Print all Data items in the Database from A to Z in sequence.
- ③ **From current page to end page** Print from the Data item in Sucard design interface currently to the last Data item completely.
- ④ **Start** **End** **Page** Print from the Data item A designated to the Data item B designated, e.g. print from 3rd item to 5th item.

Please see chapter4[Card Printing] for more printing set and start mass printing.